



ONE STOP SHOP FOR
PIPES
FITTINGS
FLANGES
VALVES

Carbon and Stainless Steel,
Alloys, Nickel Alloys,
Duplex & Super Duplex
ASTM, EN, DIN, GOST
standards

EQUAL TEE SMLS
ASTM A403 WPS 304

LONG STUD END
ASTM A 403 WP 304

ELBOW 90° SMLS
ASTM A815 UNS S31803

CONC REDUCER
ASTM A403 WPS 316L



BAGODA STEEL PROJECT

BAGODA STEEL PROJECT is firmly established as one of the world's leading supplier of piping materials. The materials we supply are all of a high quality and are in accordance with ASTM, DIN, EN and ISO standards.

We supply complete packages of pipes, butt weld fittings, forged fittings, olets, flanges, valves and studbolts in many different steel grades such as Carbon steel, Stainless steel, Alloy steel, Nickel Alloy, Duplex and Super Duplex steel. As well as offering standard products we also offer special pieces according to customer drawing whatever the requirement is for pipes, fittings or flanges.

The principles and standards of Bagoda Steel Project has made the company one of the most reputed trading organization and we were able to satisfy all of our Regional and Global customers who are based in Europe, Russia, Middle East, Africa, Asia and American Markets.

We offer professional management of small and large scale projects, short lead times, on-time delivery and most importantly high quality products. The products we supply are fully approved by the major inspection authorities like TÜV, Lloyd's, DNV, and B.V. and come with EN10204 3.1 certification. Our materials are used in critical applications, such as Chemical and Petrochemical plants, Oil installations, Power plants, Shipyards and Offshore platforms.



Seamless Alloy Pipes / Boiler Tubes

Standards: ASTM, DIN, EN

Steel Grades: A335-P5,P9,P11,P22,P91, 16Mo3, 13CrMo4-5, 10CrMo9-10, X11CrMo5, X10CrMoVNb9-1, X 20 CrMo V 11-1

Schedules: SCH STD - SCH160/XXS

Thickness: 1.5mm to 80.0mm

Ends: Bevelled/Plain

Lengths: SRL 5-8m and DRL 9-13m

Availability: Stock / Production



Welded & Seamless Stainless/Duplex Pipes

Standard: ASTM, DIN, EN

Steel Grades: TP304L, TP316L, TP316TI, TP304H, TP310S, TP321H, TP347H, TP904L, UNS S31803 (DUPLEX), UNS S32760 (SUPER DUPLEX)

Sizes: 1/8" to 36" - 10.29 mm to 914.40 mm

Schedules: SCH STD, SCH XS, SCH XXS, SCH 5S, SCH 10/10S, SCH 20, SCH 30, SCH 40/40S, SCH60, SCH80/80S, SCH 100, SCH 120, SCH 140, SCH 160

Thickness: 1.5mm to 80.0 mm

Ends: Bevelled/Plain

Lengths: SRL 5-8m and DRL 9-13 m

Availability: Stock / Production

Seamless Pipes Carbon & Low Temperature

Standard: ASTM, DIN, EN

Steel Grades: A333 Gr.6, A106 Gr B/A/C, API 5L X42, X46, X52,X60, X65, X70 (PSL1 & PSL2)

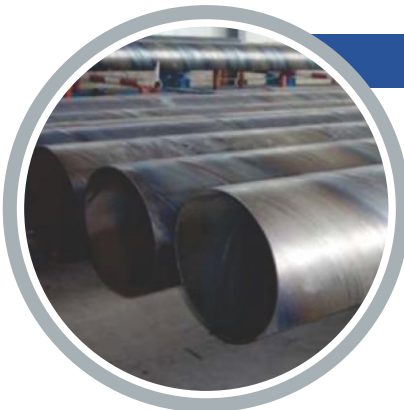
Sizes: 3/8" to 24" - 10.2mm to 610.0mm

Schedules: SCH STD, SCH XS, SCH XXS, SCH20, SCH40,SCH60, SCH80,SCH100,SCH120,SCH140,SCH160

Ends: Bevelled/Plain

Lengths: SRL 5-8m and DRL 9-13m

Availability: Stock / Production



Welded Pipes Longitudinally/Spiral ERW-SAW

Standard: ASTM, DIN, EN

Steel Grades: API 5L Gr.B, X42, X46, X52,X60, X65, X70, S235JR, S275J2H, S355J2H, S355JOH, P235HG,P265GH, P355N, P420N, L245NB, L290NB, ST37.8, ST35.8

Sizes: 3" to 60" - 80.0mm to 1600.0mm

Schedules: SCH STD, SCH XS, SCH XXS, SCH20,SCH30,SCH40, SCH60,SCH80,SCH100,SCH120,SCH140,SCH160

Thickness: 1.5mm to 60.0mm

Ends: Bevelled/Plain

Lengths: SRL/DRL 6-18m

Availability: Stock / Production

Welded & Seamless Nickel Alloy Pipes

Standards: ASTM, EN

Steel Grades: Alloy 825, Alloy 625, Alloy 600, Alloy 400, Alloy 201, Inconel C276, Alloy 200

Sizes: 3" to 42"

Schedules: SCH STD - SCH160/XXS

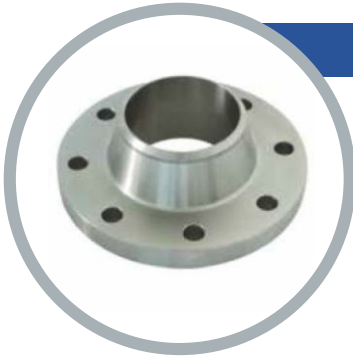
Thickness: 1.5mm to 60.0mm

Ends: Bevelled/Plain

Lengths: SRL 5-8m

Availability: Stock / Production





Welding Neck Flange

Standard: ASTM, EN, DIN

Rate: From 150LBS to 2500LBS / PN10 to Pn400

Size: From 1/2" to 68"

Materials Carbon Steel: ASTM A105 / ASTM A350 LF2 Self coloured & Hot Dip Galvanised

Materials Stainless Steel: ASTM A182 F304L, F316L, 304H, F321, F321H, F347, F347H, F310S, F317, F904L

Materials Alloy Steel: ASTM A182 F1, F5, F9, F11, F22, F91

Material Duplex & Nickel Alloy: ASTM A182 F51, F53, F55, Alloy 825, Alloy 625, Alloy 600, Alloy 400, Alloy 201, Inconel C276, Alloy 200

Type: RF, FF, RTJ

Availability: Stock / Production

Blind Flange

Standard: ASTM, EN, DIN

Rate: From 150LBS to 2500LBS / PN10 to Pn400

Size: From 1/2" to 68"

Materials Carbon Steel: ASTM A105 / ASTM A350 LF2 Self coloured & Hot Dip Galvanised

Materials Stainless Steel: ASTM A182 F304L, F316L, 304H, F321, F321H, F347, F347H, F310S, F317, F904L

Materials Alloy Steel: ASTM A182 F1, F5, F9, F11, F22, F91

Material Duplex & Nickel Alloy: ASTM A182 F51, F53, F55, Alloy 825, Alloy 625, Alloy 600, Alloy 400, Alloy 201, Inconel C276, Alloy 200

Type: RF, FF, RTJ

Availability: Stock / Production



Slip On Flange

Standard: ASTM, EN, DIN

Rate: From 150LBS to 2500LBS / PN10 to Pn400

Size: From 1/2" to 68"

Materials Carbon Steel: ASTM A105 / ASTM A350 LF2 Self coloured & Hot Dip Galvanised

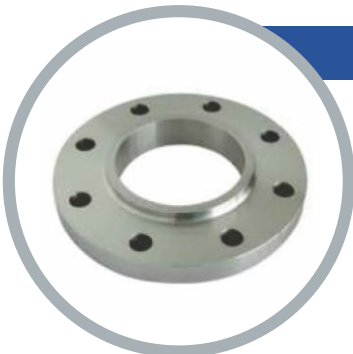
Materials Stainless Steel: ASTM A182 F304L, F316L, 304H, F321, F321H, F347, F347H, F310S, F317, F904L

Materials Alloy Steel: ASTM A182 F1, F5, F9, F11, F22, F91

Material Duplex & Nickel Alloy: ASTM A182 F51, F53, F55, Alloy 825, Alloy 625, Alloy 600, Alloy 400, Alloy 201, Inconel C276, Alloy 200

Type: RF, FF, RTJ

Availability: Stock / Production



Socket Weld Flange

Standard: ASTM, EN, DIN

Rate: From 150LBS to 2500LBS / PN10 to Pn400

Size: From 1/2" to 68"

Materials Carbon Steel: ASTM A105 / ASTM A350 LF2 Self coloured & Hot Dip Galvanised

Materials Stainless Steel: ASTM A182 F304L, F316L, 304H, F321, F321H, F347, F347H, F310S, F317, F904L

Materials Alloy Steel: ASTM A182 F1, F5, F9, F11, F22, F91

Material Duplex & Nickel Alloy: ASTM A182 F51, F53, F55, Alloy 825, Alloy 625, Alloy 600, Alloy 400, Alloy 201, Inconel C276, Alloy 200

Type: RF, FF, RTJ

Availability: Stock / Production



ButtWeld Fittings Carbon Steel

Manufacturing Standards: ASTM, EN, DIN

Fitting Types: 45°/90°/180° LR or SR Elbows, Concentric Reducers, Eccentric Reducers, Equal Tees, Reducing Tees, Caps.

Process: Seamless and Welded

Steel Grades: A234WPB, A234WPL6, WPHY 42, WPHY 46, WPHY 52, WPHY 60, WPHY 65, WPHY 70, P235GH, P265GHL245NB - L290NB - L360NB - L415NB - L360QB - L415QB - L450QB - L485QB - L555Q

Sizes: 3/8" to 62" - 10.2mm to 1560.0mm

Schedules: SCH STD - SCH160/XXS

Thickness: 1.5mm to 60.0mm

Ends: Bevelled/Plain

Availability: Stock / Production



ButtWeld Fittings Stainless & Duplex Steel

Manufacturing Standards: ASTM, EN, DIN

Fitting Types: 45°/90°/180° LR or SR Elbows, Concentric Reducers, Eccentric Reducers, Equal Tees, Reducing Tees, Caps.

Process: Seamless and Welded

Steel Grades: WP304L, WP316L, WP316TI, WP317L, WP304H, WP310S, WP321H, WP347H, WP904LUNS S31803 (DUPLEX), UNS S32760 (SUPER DUPLEX)

Sizes: 3/8" to 56" - 10.2mm to 1442.0mm

Schedules: SCH STD - SCH160/XXS

Thickness: 1.5mm to 50.0mm

Ends: Bevelled/Plain

Availability: Stock / Production

ButtWeld Fittings Alloy Steel

Manufacturing Standards: ASTM, EN, DIN

Fitting Types: 45°/90°/180° LR or SR Elbows, Concentric Reducers, Eccentric Reducers, Equal Tees, Reducing Tees, Caps.

Process: Seamless and Welded

Steel Grades: A234 WP1, WP5, WP9, WP11, WP12, WP22, Wp91 16Mo3, 13CrMo4-5, 10CrMo9-10, X11CrMo5, X10CrMoVNb9-1, X 20 CrMo V 11-1

Sizes: 3/8" to 56" - 10.2mm to 1442.0mm

Schedules: SCH STD - SCH160/XXS

Thickness: 1.5mm to 50.0mm

Ends: Bevelled/Plain

Availability: Stock / Production



ButtWeld Fittings Nickel Alloy Steel

Manufacturing Standards: ASTM, EN, DIN

Fitting Types: 45°/90°/180° LR or SR Elbows, Concentric Reducers, Eccentric Reducers, Equal Tees, Reducing Tees, Caps.

Process: Seamless and Welded

Steel Grades: Alloy 825, Alloy 625, Alloy 600, Alloy 400, Alloy 201, Inconel C276, Alloy 200

Sizes: 3/8" to 24" - 10.2mm to 609.6mm

Schedules: SCH STD - SCH160/XXS

Thickness: 1.5mm to 60.0mm

Ends: Bevelled/Plain

Availability: Stock / Production



Forged Steel Fittings

Dimensions to: ANSI B16.11 / BS 3799 / B1.20.1 / ISO 7-1 / MSS SP 97 / MSS SP 83 / MSS SP 95

Ends: NPT / Socket Weld / BSPT

Rating: 3000LBS / 6000LBS / 9000LBS

Standards: ASTM ASME ANSI MSS

Size: 1/8" to 4"

Type: 90 Degree Elbow / 45 Degree Elbow / Equal & Reducing Tee / Full & Reducing Coupling / Bushes / Plugs / Caps / Crosses / Unions

Materials Carbon Steel: ASTM A105 / ASTM A350 LF2 Self coloured & Hot Dip Galvanised

Materials Stainless Steel: ASTM A182 F304L, F316L, 304H, F321, F321H, F347, F347H, F310S, F317, F904L

Materials Alloy Steel: ASTM A182 F1, F5, F9, F11, F22, F91

Material Duplex Steel: ASTM A182 F51, F53, F55, Alloy 825, Alloy 625, Alloy 600, Alloy 400, Alloy 201, Inconel C276, Alloy 200

Olets

Dimensions to: MSS-SP97

Standards: ASTM ASME ANSI MSS

Rating: 3000LBS / 6000LBS

Schedule: STD to SCH 160

Size: 1/2" to 36"

Type: Weldolet / Sockolet / Thredolet / Sweepolet / Nipolet / Elbolet / Latrolet / Nipoflange

Materials Carbon Steel: ASTM A105 / ASTM A350 LF2 Self coloured & Hot Dip Galvanised

Materials Stainless Steel: ASTM A182 F304L, F316L, 304H, F321, F321H, F347, F347H, F310S, F317, F904L

Materials Alloy Steel: ASTM A182 F1, F5, F9, F11, F22, F91

Material Duplex Steel: ASTM A182 F51, F53, F55, Alloy 825, Alloy 625, Alloy 600, Alloy 400, Alloy 201, Inconel C276, Alloy 200



Pipe Nipples

Threaded both ends / Plain one end / Threaded one end / Plain both ends / Victaulic

Thread: NPT / BSPT

Size: 1/8" to 8"

Standard lengths: 50mm to 200mm

Schedule: STD to SCH 160

Materials: ASTM A106 Gr B / API 5L Gr B Galvanised / ASTM A333 Gr 6 /

API 5L Gr X52 / ASTM A182 F304L / ASTM A182 F316L /

ASTM A182 304H / ASTM A182 F321 / ASTM A182 F321H /

ASTM A 182 F347 / ASTM A182 F347H / ASTM A182 F310 /

ASTM A182 F317 / ASTM A182 F1 / ASTM A182 F5 /

ASTM A182 F9 / ASTM A182 F11 / ASTM A182 F22 / ASTM A182 F91



Special Flanges

Standards: ASTM, EN, DIN, GOST

Type: Swivel flange, Tube sheet, Anchor, Orifice, Compact, Drip Rings, Spades & Spacers

Materials: Carbon steel, Stainless, Duplex, Super Duplex, Nickel Alloy

Availability: Production only



Induction Bends

Manufacturing Standards: ASTM, EN, DIN
Radius: 2D, 3D, 5D, 7D, 10D
Process: Seamless and Welded
Steel Grades: Carbon Steel, Stainless Steel, Alloy Steel only
Sizes: 3/8" to 42" - 10.2 mm to 1067.0 mm
Schedules: SCH STD - SCH160/XXS
Thickness: 1.5 mm to 60.0 mm
Ends: Bevelled/Plain
Availability: Stock / Production



Special Pieces / According to Drawing



Manufacturing Standards: ASTM, EN, DIN
Fitting Types: Reducing Elbow, Barred Tee, Y Piece,
Long Tangent Elbow, Crosses
Process: Seamless and Welded
Steel Grades: Carbon Steel, Stainless Steel, Alloy Steel only
Sizes: 3/8" to 60"
Thickness: 1.5 mm to 60.0 mm
Ends: Bevelled/Plain
Availability: Production only

Flange Stud Bolts

Standards: ASTM, EN, BS
Types: Hexagon Bolts, Hexagon Flange Bolts, Socket Head Cap Screws,
Hexagon Flange Nuts Square Head Bolts, Round Head Bolts,
Fully Threaded Studbolts, Washers
Material: Carbon steel, Stainless, Steel, Duplex Steel, Alloy Steel,
Nickel Alloys
Availability: Stock / Production



Flange Gaskets

We offer flange gaskets to suit all flanges.



WE DELIVER OUR PRODUCTS WORLDWIDE



SINCE 1996

BAGODA STEEL PROJECT

(AN MSME CERTIFIED CO., 9001:2015 CERTIFIED CO., & PED APPROVED CO.)

350/352, Baram Street, Grant Road East, Bharat Nagar,
Grant Road, Mumbai - 400 007, Maharashtra, India.
Tel. : +91 22-6615 1721 / 6636 3387

Shop No.3, Sonia Apartment, Magar Stadium Road,
Yeshwant Nagar, Pimpri, Pune -411018, Maharashtra, India
Tel. : +91 20-2747 7007

BRANCH : HYDERABAD, TAMILNADU, KARNATAKA ETC.

www.bagodasteelproject.com